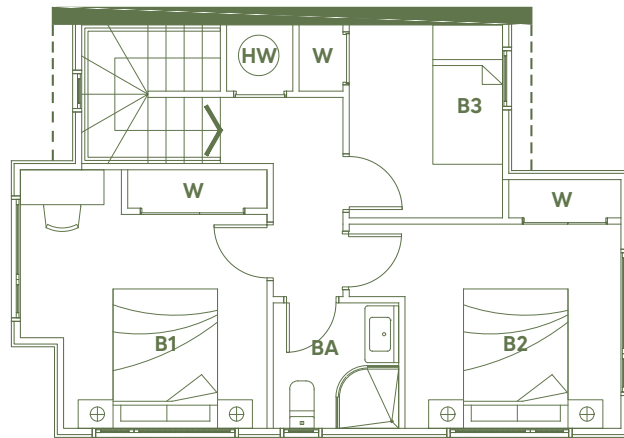
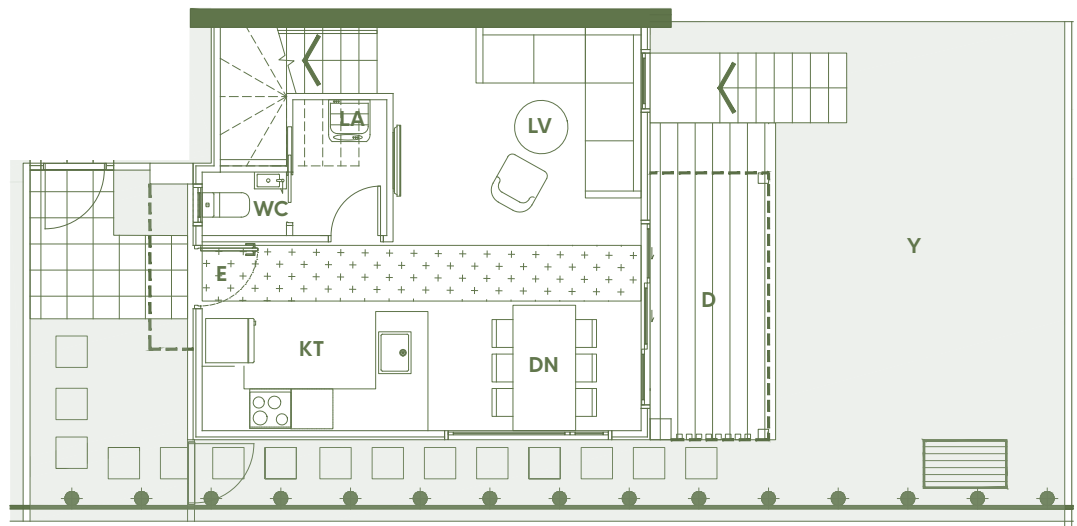


Three-bedroom duplex

+ car park



First Floor

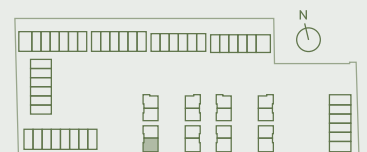


Ground Floor



Floor Area GFA 85m²
Total Land Area 107m²
Car Park 12m²

Notes: Floor area GFA (gross floor area) and total land areas may vary slightly from each typical unit. Window/door types have slight variations between typical units. All areas are estimated only and may change. Furniture and furnishings are indicative and are not included. Layouts, positions and specifications are subject to further changes as per the sales agreement.



3 Bedroom, 1.5 Bathroom, 1 Car Park - Unit 22

B#	Bedrooms	E	Entry	LV	Living
BA	Bathroom	HW	Hot water cylinder	W	Wardrobe
D	Deck	KT	Kitchen	WC	Water closet
DN	Dining	LA	Laundry	Y	Yard

The
Green
ON WOODGLEN